

# MD 10

## Surgical Motor System

for IMPLANTOLOGY, RECONSTRUCTIVE and MAXILLOFACIAL SURGERY

NOUVAG's MD 10 is a powerful, user-friendly surgical motor system used for general oral surgery, implantology as well as for all kinds of micro surgery procedures.

- all working facets of implant surgery can be done using one single contra angle (reduction 32:1)
- high torque with a built-in torque controller and safety overload protection
- 10 preselectionable torque levels:  
10 / 15 / 20 / 25 / 30 / 35 / 40 / 45 / 50 / 55 Ncm
- footpedal controls the selected speed, forward/reverse and use of the pump
- can be used in operation theatre with footcontrol IP68
- immediate stop-function
- peristaltic pump for irrigation
- adjustable speed control
- quick set-up of all functions
- alarm buzzer in reverse mode
- fixed pre-set speed keys

Microprocessor controlled  
brushless electronic motor  
system MD 10 for maximum  
microsurgery versatility under  
operation theatre conditions.



### Technical Data:

Voltage:  
Power:  
Drive System:  
Speed Range:  
Motor Torque:  
Handpiece Torque:  
Fluid flow rate:  
Dimensions (W x D x H):  
Control unit weight:

*«Probably the best  
Implantology unit  
in the world.»*

switchable, 115V/60 Hz, 230V/50 Hz  
130 W  
Electronic-Motor (brushless)  
500 - 40'000 rpm  
10 Ncm  
10 - 55 Ncm  
10 to 50 ml/min  
260 x 300 x 400 mm  
6 kg

NOUVAG AG  
St. Gallerstr. 23-25  
CH-9403 Goldach  
Switzerland

Phone +41 (0)71 846 66 00  
Fax +41 (0)71 846 66 70  
info@nouvag.com  
www.nouvag.com



**NOUVAG**  
Dental and Medical Equipment



NOUVAG USA Inc.  
18058 Albyn Court  
Lake Hughes, CA 93532  
U.S.A.

Toll free (800) 673 7427  
Phone +1 661 724 0217  
Fax +1 661 724 1590  
paul@nouvagusa.com

Please visit our new website:

**www.nouvag.com**



**No. 4123 Trolley**  
movable stand with  
- anti-static wheels  
- drawer  
- holding brake



**No. 1031 Suitcase**  
for ambulant treat-  
ment



**No. 1866 Footpedal**  
IP 68 controls motor  
speed. Pump and For-  
ward/Reverse-Mode,  
Ex-protected, can be  
used in operation theatre



**No. 4220 Vacuson 40 U**  
Surgery pump with suction-  
bottle, sterilizable max.  
134°C / 274°F



#### **No. 2063 Electronicmotor**

with continuous high-torque, standard E-Type-adaptor for E-Type  
contra angles and handpieces, autoclavable  
motor-speed: 500 - 40'000 rpm



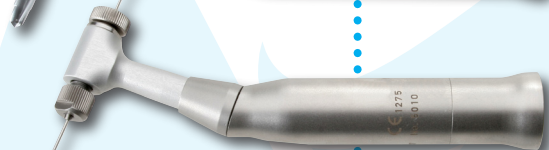
#### **Contra-Angles**

Reduction-ranges with internal & external irrigation

No. 5050 = 1:1 500 - 40'000 rpm

No. 5060 = 16:1 30 - 2'500 rpm

No. 5054 = 32:1 15 - 1'250 rpm



#### **No. 5010 Contra Angle for Surgery Wires**

E-Type Contra Angle for Surgery Wires

Ø 0,5 - 1,6 mm with reduction 16:1

Max. speed: 2'500 rpm

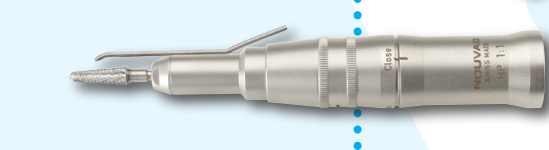


#### **No. 1960 Contra Angle 1:1**

with quick tool clamping, 40'000 rpm

Type of shank ISO 106, Ø 2,35 mm, L 70 - 90 mm

with external irrigation clip

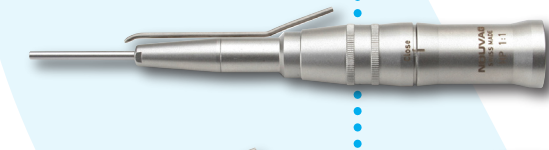


#### **No. 1710 Handpiece 1:1**

with quick tool clamping, 40'000 rpm

Type of shank ISO 106, Ø 2,35 mm, L 44 - 58 mm

with external irrigation clip

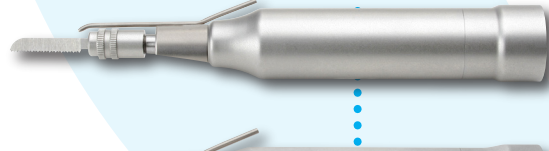


#### **No. 1950 Handpiece 1:1**

with quick tool clamping, 40'000 rpm

Type of shank ISO 106, Ø 2,35 mm, L 70 - 90 mm

with external irrigation clip

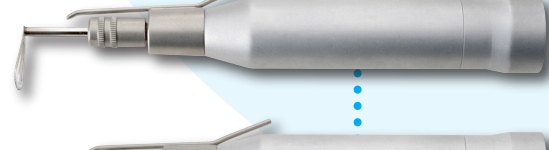


#### **No. 5040 Micro-Saw Compass**

without saw blades, with E-Type-coupling,

with external irrigation clip

Max. speed 20'000 rpm



#### **No. 5090 Micro-Saw Oscillating**

without saw blades, with E-Type-coupling,

with external irrigation clip

Max. speed: 15'000 rpm



#### **No. 5110 Micro-Saw Sagittal**

without saw blades, with E-Type-coupling,

with external irrigation clip

Max. speed: 15'000 rpm



#### **No. 1970 Mucotome** - for mucosal reparative surgery:

Max. speed: 8'000 rpm.

cutting width: 8 mm

thickness of graft: 0,5 mm

